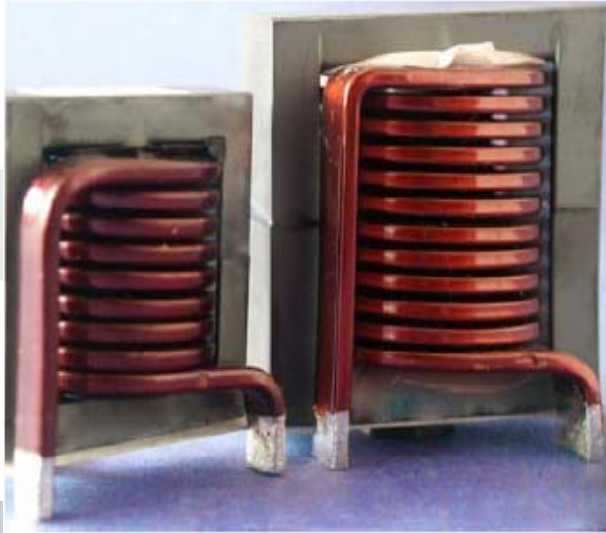


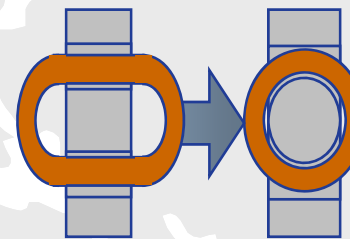
"EER" Shape Series



❖ ROUND shape rod

>> DCR reduction

Cf. advantage of Loss

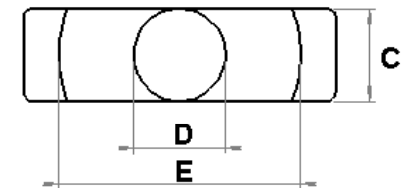
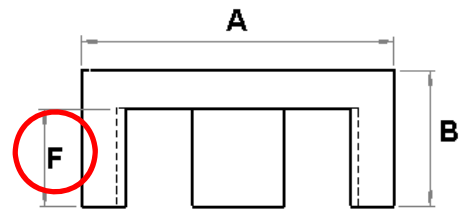


Reduction of
Copper volume
Copper loss
Copper price



❖ Available Materials

- Available Material: High Flux, Mega Flux, Sendust
- Available Permeability: 26u and 40u



High Flux EER Core

HIGH FLUX : HER3511A-060

P/N	Dimensions						Path length (cm)	Cross Section Area (cm ²)	AL value (nH/n ²)±12%		
	A (mm)	B (mm)	C (mm)	D (mm)	E (mm)	F [min] (mm)			026u	040u	060u
HER 2507A	25.5±0.3	9.3±0.2	7.5±0.2	7.5±0.2	19.8±0.2	6.2	5.10	0.450	39	53	73
HER 2507B	25.5±0.3	11.0±0.2	7.5±0.2	7.5±0.2	19.8±0.2	7.9	5.78	0.450	34	47	65
HER 3010A	30.6±0.3	15.8±0.2	9.8±0.2	9.8±0.2	22.0±0.2	11	8.66	0.754	38	53	72
HER 3511A	35.0±0.4	15.8±0.2	11.3±0.2	11.3±0.2	25.6±0.3	9.8	8.30	1.078	57	78	108
HER 3511B	35.0±0.4	20.7±0.2	11.3±0.2	11.3±0.2	25.6±0.3	14.7	10.27	1.078	46	63	87
HER 4013A	40.0±0.5	17.4±0.3	13.3±0.3	13.3±0.3	29.0±0.4	10.4	9.13	1.491	72	99	135
HER 4013B	40.0±0.5	22.4±0.3	13.3±0.3	13.3±0.3	29.0±0.4	15.4	11.13	1.491	59	81	111
HER 4215A	42.0±0.6	22.4±0.4	15.5±0.4	15.5±0.4	29.4±0.5	15.4	10.64	2.026	84	115	158
HER 4215B	42.0±0.6	25.4±0.4	15.5±0.4	15.5±0.4	29.4±0.5	18.4	11.84	2.026	75	103	142
HER 4917A	49.0±0.7	18.8±0.5	17.2±0.5	17.2±0.5	36.5±0.6	12.2	9.57	2.353	99	136	185
HER 4917B	49.0±0.7	24.7±0.5	17.2±0.5	17.2±0.5	36.5±0.6	18.1	11.93	2.353	79	109	149



Mega Flux EER Core

MEGA FLUX : KER3511A-060

P/N	Dimensions						Path length (cm)	Cross Section Area (cm ²)	AL value (nH/n ²)±12%		
	A (mm)	B (mm)	C (mm)	D (mm)	E (mm)	F[mi] (mm)			026u	040u	
KER2507A	25.5±0.3	9.3±0.2	7.5±0.2	7.5±0.2	19.8±0.2	6.2	5.10	0.450	39	53	
KER2507B	25.5±0.3	11.0±0.2	7.5±0.2	7.5±0.2	19.8±0.2	7.9	5.78	0.450	34	47	
KER3010A	30.6±0.3	15.8±0.2	9.8±0.2	9.8±0.2	22.0±0.2	11	8.66	0.754	38	53	
KER3511A	35.0±0.4	15.8±0.2	11.3±0.2	11.3±0.2	25.6±0.3	9.8	8.30	1.078	57	78	
KER3511B	35.0±0.4	20.7±0.2	11.3±0.2	11.3±0.2	25.6±0.3	14.7	10.27	1.078	46	63	
KER4013A	40.0±0.5	17.4±0.3	13.3±0.3	13.3±0.3	29.0±0.4	10.4	9.13	1.491	72	99	
KER4013B	40.0±0.5	22.4±0.3	13.3±0.3	13.3±0.3	29.0±0.4	15.4	11.13	1.491	59	81	
KER4215A	42.0±0.6	22.4±0.4	15.5±0.4	15.5±0.4	29.4±0.5	15.4	10.64	2.026	84	115	
KER4215B	42.0±0.6	25.4±0.4	15.5±0.4	15.5±0.4	29.4±0.5	18.4	11.84	2.026	75	103	
KER4917A	49.0±0.7	18.8±0.5	17.2±0.5	17.2±0.5	36.5±0.6	12.2	9.57	2.353	99	136	
KER4917B	49.0±0.7	24.7±0.5	17.2±0.5	17.2±0.5	36.5±0.6	18.1	11.93	2.353	79	109	

Cf. 60u is available from June, 2009

Sendust EER Core

SENDUST : SER3511A-040

P/N	Dimensions						Path length (cm)	Cross Section Area (cm ²)	AL value (nH/n ²)±12%		
	A (mm)	B (mm)	C (mm)	D (mm)	E (mm)	F [min] (mm)			026u	040u	
SER2507A	25.5±0.3	9.3±0.2	7.5±0.2	7.5±0.2	19.8±0.2	6.2	5.10	0.450	39	53	
SER2507B	25.5±0.3	11.0±0.2	7.5±0.2	7.5±0.2	19.8±0.2	7.9	5.78	0.450	34	47	
SER3010A	30.6±0.3	15.8±0.2	9.8±0.2	9.8±0.2	22.0±0.2	11	8.66	0.754	38	53	
SER3511A	35.0±0.4	15.8±0.2	11.3±0.2	11.3±0.2	25.6±0.3	9.8	8.30	1.078	57	78	
SER3511B	35.0±0.4	20.7±0.2	11.3±0.2	11.3±0.2	25.6±0.3	14.7	10.27	1.078	46	63	
SER4013A	40.0±0.5	17.4±0.3	13.3±0.3	13.3±0.3	29.0±0.4	10.4	9.13	1.491	72	99	
SER4013B	40.0±0.5	22.4±0.3	13.3±0.3	13.3±0.3	29.0±0.4	15.4	11.13	1.491	59	81	
SER4215A	42.0±0.6	22.4±0.4	15.5±0.4	15.5±0.4	29.4±0.5	15.4	10.64	2.026	84	115	
SER4215B	42.0±0.6	25.4±0.4	15.5±0.4	15.5±0.4	29.4±0.5	18.4	11.84	2.026	75	103	
SER4917A	49.0±0.7	18.8±0.5	17.2±0.5	17.2±0.5	36.5±0.6	12.2	9.57	2.353	99	136	
SER4917B	49.0±0.7	24.7±0.5	17.2±0.5	17.2±0.5	36.5±0.6	18.1	11.93	2.353	79	109	

Cf. 60u is available from June, 2009